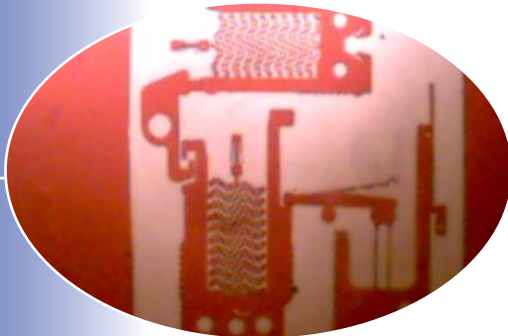


2D Accelerometer Made from Liquid Crystal Polymer

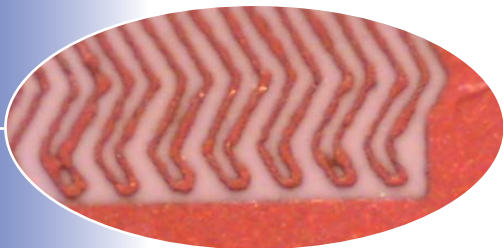
APPLICATIONS
NOTE #103



*Thin Film Accelerometer
(Device Dimensions 16
mm x 13 mm)*



*Magnified View of
Accelerometer Structure
(10X)*



*Mechanical Structures
on Accelerometer
(60X)*

Overview:

A two dimensional accelerometer is fabricated from liquid crystal polymer (LCP) using the SF-100.

Process Flow:

1. Start copper clad LCP thin film.
2. Photoresist pattern using standard positive photoresist and the SF-100.
3. Wet etch copper.
4. Remove photoresist.



INTELLIGENT
MICRO PATTERNING, LLC